



Appendix: Services and branches with multiple National Childcare Register (LRK)

Appendix: Services and branches with multiple National Childcare Register (LRK) numbers

Contents

| | |
|---|-----------|
| Contents..... | 2 |
| Daycare | 4 |
| Settling in | 5 |
| Services and Terms and Conditions of daycare (KDV)..... | 5 |
| 52-week contract..... | 6 |
| Contract credit hour..... | 6 |
| 51-week contract | 7 |
| 46-week contract..... | 8 |
| 40-week contract..... | 9 |
| Extra childcare | 10 |
| Bilingual childcare | 11 |
| Flexible childcare | 12 |
| Changing services provided..... | 13 |
| Lastly..... | 14 |
| Branches with multiple National Childcare Register (LRK) numbers..... | 15 |
| After-School Care (BSO) | 17 |
| 52-week contract..... | 18 |
| Services and terms and conditions of After-School Care (BSO) | 18 |
| 50-hour stamp card | 18 |
| Contract credit hours..... | 19 |
| 51-week contract | 20 |
| 46-week contract..... | 20 |
| 40-week contract..... | 22 |
| 0-hour holiday contract..... | 23 |
| Holiday contract..... | 23 |
| Extra childcare | 24 |

Appendix: Services and branches with multiple National Childcare Register (LRK) numbers

- BSO summer weeks.....24
- Childcare during teachers’ study days and school days with no classes24
- Transportation to/from After-School Care.....25
- Before-School Care (VSO).....25
- Changing services provided.....26
- Lastly.....26
- Branches with multiple National Childcare Register (LRK) numbers.....27

Kindergarten (PO) & Pre-school (VVE)..... 29

- Kindergarten (PO) and Pre-School Education (VVE)30
- Services and terms and conditions of Kindergarten (PO) & Pre-School (VVE)30
- Changing services provided.....30
- Additional terms and conditions for Pre-School Education (VVE)31
- Lastly.....32



Daycare

Appendix: Services and branches with multiple National Childcare Register (LRK) numbers

Services and Terms and Conditions of daycare (KDV)

CompaNanny will assess whether it is possible to make use of or to continue to make use of the service packages listed below at your branch. [Our locations¹](#) page on our website clearly shows which services are provided at your branch.

Settling in

Once CompaNanny has received a signed contract, your child can start settling in at CompaNanny. If your child has started the settling-in period at CompaNanny before the start date of the contract, the contract and additional terms and conditions will already apply.

CompaNanny wants children to gradually feel comfortable in their new environment. This is why CompaNanny offers a settling-in programme, which consists of three settling-in sessions:

- Settling-in session 1: this first settling-in session will last about two hours and will take place before the start date; there is no extra cost for this session;
- Settling-in session 2: the second settling-in session will last about four hours and will take place on the first day of the contract. This day will be charged in full, regardless of the duration of the settling-in session.
- Settling-in session 3: the third settling-in session will last between six and nine hours and will take place on the second day of the contract. This day will be charged in full, regardless of the duration of the settling-in session.

If a child needs more time to settle in, additional arrangements will be made.

We will contact you about four weeks before the start date to discuss the settling-in days and to schedule an intake interview.

¹ <https://www.compananny.com/en/locations/>

Appendix: Services and branches with multiple National Childcare Register (LRK) numbers

52-week contract

For the entire year.

- Daycare: All day childcare for 52 weeks a year on the contract day(s) (at the daycare centre) from 7:30 am to 6:30 pm².
- The 52-week contract entitles you to 52 weeks of childcare per calendar year on the agreed contract day(s).
- A calendar year runs from 1 January to 31 December.

With the exception of the days specified in the General Terms and Conditions for Childcare, Daycare and After-School Care of the Association for the Childcare Sector in the Netherlands (BK) and CompaNanny's Additional Terms and Conditions.

Contract credit hour

At some daycare branches, contract credit hours are part of the contract.

- Based on the number of contract days per week, the same number of days in hours of contract credit hours are included in the contract per year.
- These contract credit hours are valid for one calendar year (for all contracts) and expire on 31 December of the year in question.
- Credits are child-specific and service-specific and can therefore not be transferred to another child, such as a brother or sister.
- This applies to the CompaNanny branches Postpad, Renkum and Zaaierplein.

² With the exception of CompaNanny Mheenpark (7:00 am to 6:00 pm) and Reehorst (choose between: 7:00 am to 6:30 pm and 07:30 am to 6:30 pm).

Appendix: Services and branches with multiple National Childcare Register (LRK) numbers

51-week contract

Childcare throughout the year, except between Christmas and New Year.

- Daycare: All day childcare for 51 weeks a year on the contract day(s) (at the daycare centre) from 7:30 am to 6:30 pm.
- The 51-week contract entitles you to 51 weeks of childcare per calendar year on the agreed contract day(s). The childcare facility is closed between Christmas (25 December) and New Year (1 January).
- A calendar year runs from 1 January to 31 December.
- With the exception of the days specified in the General Terms and Conditions for Childcare, Daycare and After-School Care of the Association for the Childcare Sector in the Netherlands (BK) and CompaNanny's Additional Terms and Conditions.



Appendix: Services and branches with multiple National Childcare Register (LRK) numbers

46-week contract

The 46-week contract consists of 40 weeks of school and six weeks of school holidays. If you opt for CompaNanny's 46-week contract, you are free to decide which six weeks of holidays, in addition to the 40 weeks of school, you will make use of childcare.

- Daycare: All day childcare for 46 weeks a year on the contract day(s) (at the daycare centre) from 7:30 am to 6:30 pm³.
- The 46-week contract entitles you to childcare in the 40 weeks of school and six weeks of school holidays per calendar year.
- A calendar year runs from 1 January to 31 December.
- The number of weeks of holiday that you are entitled to will be included in the contract on a pro rata basis, based on the start date. You will receive a holiday credit for this.
- You can register your child for childcare for no more than six weeks during holiday weeks. The holiday weeks are the same as the school holidays that apply to the region where the branch is located.
- The six unpaid weeks during which your child does not make use of childcare, fall within the school holidays that apply to the region where the branch is located.
- Childcare for your child will be routinely scheduled during regular school weeks and will not be routinely scheduled during school holidays.
- The six weeks of holiday in which your child will make use of the facilities must be requested at least one month in advance via the Parent Portal. If you requested childcare during holiday weeks at least one month in advance, your child's place will be guaranteed on contract days.
- If you request childcare during holiday weeks less than a month before the desired day or for days other than the contract days, childcare will only be possible subject to availability.
- You can only register for childcare during holiday weeks for full weeks and only for contract days.
- You can register your child for childcare for no more than six weeks during school holidays.
- If you require childcare for more than 46 weeks, you can request this in the Parent Portal as an Extra Day. These days will be invoiced retrospectively.
- Any remaining credit will expire on 1 January of the following calendar year and upon termination of the contract.
- Upon termination of the contract, a pro rata settlement will be made, if necessary, for childcare services used over and above that agreed in the contract.
- The costs for the 46-week contract must be paid in 12 equal monthly instalments. An average monthly amount will be calculated for the 46 weeks per year, which will be collected monthly by

³ With the exception of CompaNanny Reehorst (choose between: 7:00 am to 6:30 pm and 07:30 am to 6:30 pm).

Appendix: Services and branches with multiple National Childcare Register (LRK) numbers

direct debit. As the Tax Administration's childcare benefit is also spread over the entire year, you do not have to report the monthly childcare hours each month.

With the exception of the days specified in the General Terms and Conditions for Childcare, Daycare and After-School Care of the Association for the Childcare Sector in the Netherlands (BK) and CompaNanny's Additional Terms and Conditions.

40-week contract

The 40-week contract consists of 40 weeks of school. If you opt for CompaNanny's 40-week contract, you will only make use of childcare during the 40 weeks of school.

- Daycare: All day childcare for 40 weeks a year on the contract day(s) (at the daycare centre) from 7:30 am to 6:30 pm.
- The 40-week contract entitles you to childcare in the 40 weeks of school per calendar year.
- A calendar year runs from 1 January to 31 December.
- The 40 weeks are the same as the weeks of school that apply to the region where the branch is located.
- The number of weeks that you are entitled to will be included in the contract on a pro rata basis, based on the start date.
- If you require childcare for more than 40 weeks, you can request this in the Parent Portal as an Extra Day.
- The type of contract cannot be changed during the calendar year.
- The costs for the 40-week contract must be paid in 12 equal monthly instalments. An average monthly amount will be calculated for the 40 weeks per year, which will be collected monthly by direct debit. As the Tax Administration's childcare benefit is also spread over the entire year, you do not have to report the monthly childcare hours each month.
- With the exception of the days specified in the General Terms and Conditions for Childcare, Daycare and After-School Care of the Association for the Childcare Sector in the Netherlands (BK) and CompaNanny's Additional Terms and Conditions.

Appendix: Services and branches with multiple National Childcare Register (LRK) numbers

Extra childcare

The primary contract holder may always request extra childcare, unless the childcare is paid for by a third party.

- You can use your credit to pay for extra childcare.
- If the primary contract holder does not have credit or it is insufficient to pay for the hours requested, the primary contract holder will receive an invoice for extra childcare for that month. Requested hours can be paid for using remaining credit. If this is insufficient, an invoice for extra childcare will be sent for the remaining amount.
- The extra childcare requested by the primary contract holder will only be definite once CompaNanny has sent an approval confirmation via the Parent Portal. Extra days will be approved from two weeks before the requested day, provided places are available in the group. Once an extra day has been approved, it cannot be cancelled.
- You may also be entitled to childcare benefit for extra childcare hours.



Appendix: Services and branches with multiple National Childcare Register (LRK) numbers

Bilingual childcare

Bilingual childcare at CompaNanny means that childcare is provided in both Dutch and English.

Ratio Dutch – English

- The 'one person, one language' principle applies to bilingual childcare, whereby one pedagogical staff member speaks only English or only Dutch during a given day.
- Each day, at least 50% of the language spoken is Dutch and at least 30% is English. This means that we have English speaking and Dutch speaking pedagogical staff members.

Language proficiency

- The pedagogical staff in the bilingual group must have a certificate or diploma demonstrating that they have at least a B2 proficiency level in Dutch and/or British English. This applies to speaking, listening, reading and holding conversations.
- The language requirement is based on the Common European Framework of Reference for Languages. If the staff member has the desired level of proficiency in both languages, they can work in both languages (on different days).

Weekly attendance

- Because it is important that children are exposed to a language for a sufficient number of hours per week for their language development, at CompaNanny we have a preference for a minimum attendance of two days a week for bilingual childcare.

Is bilingual childcare suitable for your child?

- The bilingual group is suitable for anyone who wants their child to receive bilingual childcare.
- This includes children from Dutch families or children of other nationalities.
- In line with the guidelines of the municipality of Amsterdam, bilingual childcare is not available for children with a care needs assessment.

Communication with parents

- All important documents for parents are available in Dutch and English.
- The information on CompaNanny's Parent Portal and the observation reports on your child are provided in Dutch or English. You can indicate your preference during the intake interview.

Appendix: Services and branches with multiple National Childcare Register (LRK) numbers

Flexible childcare

Flexible childcare is only offered by CompaNanny Schiphol Centrum.

Opening hours

- CompaNanny Schiphol Centrum is open on workdays from 7:00 am to 7:00 pm.
- In the event of a demonstrable emergency, such as a delayed flight, CompaNanny Schiphol Centrum will remain open until the client comes to pick up their child.
- Due to legislation and regulations, childcare services are only available for your child starting at the requested time. If clients arrive at the location before this time, we ask them to wait in the hallway.
- Due to legislation and regulations, childcare services are only available for your child until the requested time. Extensions are possible subject to availability and can be arranged by phone with the branch.

Requesting availability

- Parents/guardians can request childcare up to one month and at least two weeks in advance (deadline: Sunday evening at midnight) via the Parent Portal to guarantee a place. Requests after this time are subject to availability. A place can only be guaranteed on the days specified in the contract. Hours outside the days specified in the contract and hours carried over from the previous month can be used subject to availability.
- Parents/guardians themselves are responsible for their requests in the Parent Portal. Requests will only be processed if they have been completed correctly and on time in the Parent Portal (see the Parent Portal manual).
- Attendance must be for at least 11 hours a day.
- Parents/guardians can request childcare starting on the hour or half hour (e.g. 7.00 am or 7.30 am).
- Clients can carry over all 'unused contract hours' to the following month. Parents/guardians themselves are responsible for using the hours carried over from the previous month. If the hours have not been used in the following month, they will expire.
- Parents/guardians are entitled to use flexible childcare if the days on which they use childcare are not regular. This means that children may only attend the childcare centre on the same days for no more than two weeks in a row.

Appendix: Services and branches with multiple National Childcare Register (LRK) numbers

- To help children settle in more easily and to prevent them from having to settle in again and again, we recommend scheduling childcare for at least one day a week or with an interval of no more than one week. This helps to maintain a routine. This makes children feel more comfortable and fosters their development at the childcare centre. If a child has difficulty with the low and/or irregular frequency of attendance, we will discuss this with the parents to try and find a solution. Together, we will discuss whether increasing the number of hours in the contract would be a desirable solution.

Cancelling a request for childcare

- Once approved, requested hours cannot be withdrawn. However, clients can cancel the hours before 4.00 pm on the previous day; these hours can then be used once as an exchange day.
- Approved requests can only be cancelled in their entirety and then used in their entirety as an exchange day.

Changing services provided

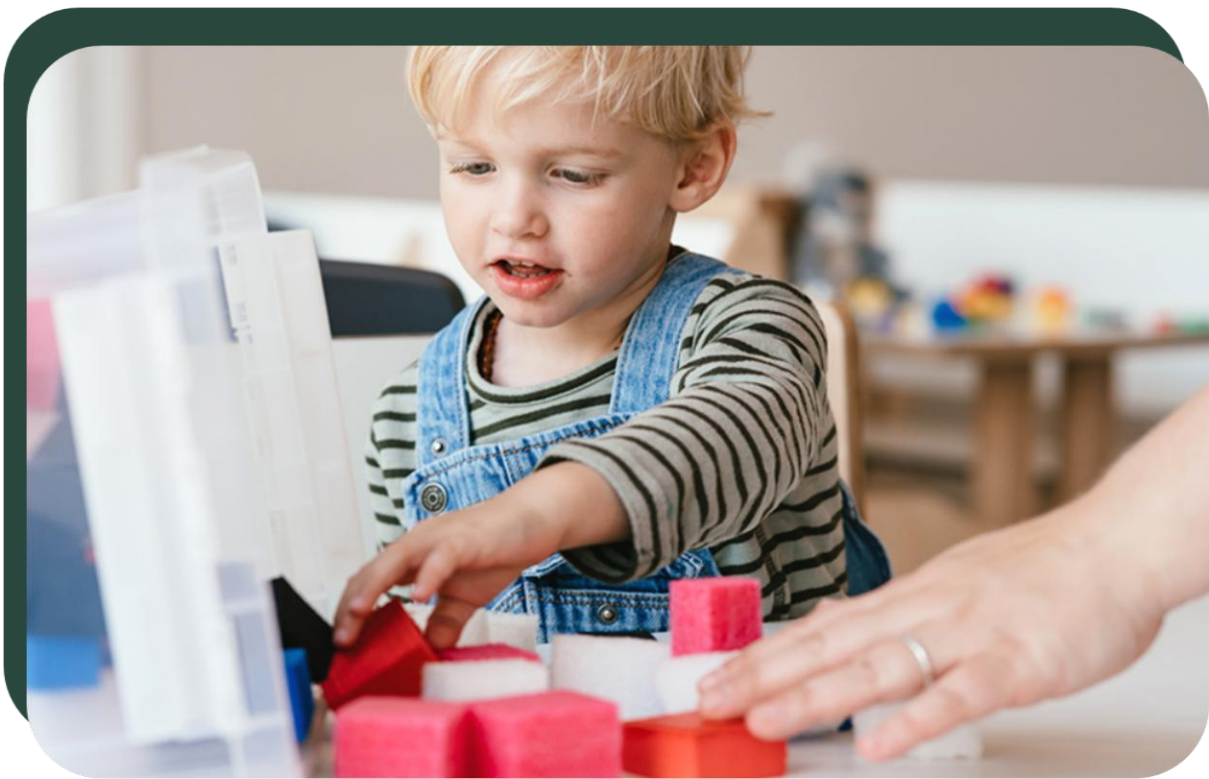
CompaNanny is allowed to change its services and products if doing so is in the interest of operational management.

During the term of the contract, CompaNanny may unilaterally change or terminate the group structure, products or extra products, services and childcare packages, the childcare hours offered per day (in the case of After-School Care, whether or not, as a result of changed school hours), number of weeks open per year, opening and closing hours, transportation and costs of transportation or other activities for valid reasons (whether or not by branch). The aforementioned changes may also include designating another location for childcare or merging groups (possibly at another location).

Appendix: Services and branches with multiple National Childcare Register (LRK) numbers

Lastly

If a problem arises that we cannot resolve together, the court in Amsterdam will take a decision. If, according to the law, another court must decide, the primary contract holder will have one month to choose that court. This month will commence as soon as CompaNanny requests it.



Appendix: Services and branches with multiple National Childcare Register (LRK) numbers

Branches with multiple National Childcare Register (LRK) numbers

The Lent, Prinsengracht and Rijnhuizen groups are located at two addresses. It is important to provide the Netherlands Tax Administration authorities with the correct LRK number. Your child will start at the LRK number stated in the contract. If your child moves to another group, the Branch Manager will inform you in good time and you must inform the Netherlands Tax Administration authorities of the change in LRK number.

At the start and end of the day on quiet days, during illness and during holidays, we may provide childcare to groups at or from other locations at one of the other LRK numbers of the branches mentioned above.

CompaNanny Lent

CompaNanny includes:

- Branch : CompaNanny Lent
Address : Truus Gelsingstraat 67
Postal code and city : 6663 RE Nijmegen
LRK number : 291613007 and;
- Branch : CompaNanny Lent B
Address : Truus Gelsingstraat 197
Postal code and city : 6663 RE Nijmegen
LRK number : 358269519

CompaNanny Rijnhuizen

CompaNanny includes:

- Branch : CompaNanny Rijnhuizen
Address : Hof van Vronestein 1A
Postal code and city : 3439 WD Nieuwegein
LRK number : 920144366 and;
- Branch : CompaNanny Rijnhuizen B
Address : Hof van Vronestein 214A
Postal code and city : 3439 WD Nieuwegein
LRK number : 270553733

Appendix: Services and branches with multiple National Childcare Register (LRK) numbers

CompaNanny Prinsengracht

CompaNanny includes:

- Branch : CompaNanny Prinsengracht
Address : Prinsengracht 617 A
Postal code and city : 1016 HV Amsterdam
LRK number : 173158742 and;
- Branch : CompaNanny Prinsengracht B
Address : Prinsengracht 617 B
Postal code and city : 1016 HV Amsterdam
LRK number : 141453801

Do you have any questions? Check our [FAQ page](#) or contact us.
We'll be happy to help.



After-School Care (BSO)

Appendix: Services and branches with multiple National Childcare Register (LRK) numbers

Services and terms and conditions of After-School Care (BSO)

CompaNanny will assess whether it is possible to make use of or to continue to make use of the service packages listed below at your branch. [Our locations⁴](#) page on our website clearly shows which services are provided at your branch.

52-week contract

Childcare for the entire year

- After-School Care is available Monday to Friday during school term weeks from the end of the first school day until 6.30 pm.
- During school holidays, scheduled days off and days with no classes, After-School Care is open 52 weeks a year from 7.30 am to 6.30 pm on the days agreed upon in your contract.
- Extra childcare hours during scheduled days off and school days with no classes are not included in the contract hours.
- The 52-week contract entitles you to 52 weeks of childcare per calendar year on the agreed contract day(s).
- A calendar year runs from 1 January to 31 December.

With the exception of the days specified in the General Terms and Conditions for Childcare, Daycare and After-School Care of the Association for the Childcare Sector in the Netherlands (BK) and CompaNanny's Additional Terms and Conditions.

50-hour stamp card

Some After-School Care branches have a 50-hour stamp card for each school year as part of the contract (not optional).

- Parents receive these 50 hours at once on 1 September.
- If the contract starts once the school year has already started, the hours will be allocated pro rata at once.
- The hours on the stamp card can be used freely via the Parent Portal and can be used for childcare on teachers' study days or for extra childcare during school weeks or school holidays.
- A total of 20 hours can be carried over to the following school year.
- Stamp cards are child-specific and service-specific and can therefore not be transferred to another child, such as a brother or sister.
- Your placement agreement will state whether the stamp card is part of your contract.

⁴ <https://www.compananny.com/en/locations/>

Appendix: Services and branches with multiple National Childcare Register (LRK) numbers

Contract credit hours

At some After-School Care branches, contract credit hours are part of the contract.

- Based on the number of contract days per week, the same number of days in hours of contract credit hours are included in the contract per year.
- These contract credit hours are valid for one calendar year (for all contracts) and expire on 31 December of the year in question.
- Credits are child-specific and service-specific and can therefore not be transferred to another child, such as a brother or sister.
- This applies to the CompaNanny Marienberg, Paasberg and Postpad branches.



Appendix: Services and branches with multiple National Childcare Register (LRK) numbers

51-week contract

Childcare throughout the year, except between Christmas and New Year.

- After-School Care is available Monday to Friday during school term weeks from the end of the first school day until 6.30 pm.
- During school holidays, scheduled days off and days with no classes, After-School Care is open from 7.30 am to 6.30 pm for 52 weeks a year on the contract day(s).
- Extra childcare hours during scheduled days off and school days with no classes are not included in the contract hours.
- The 51-week contract entitles you to 51 weeks of childcare per calendar year on the agreed contract day(s). The childcare facility is closed between Christmas (25 December) and New Year (1 January).
- A calendar year runs from 1 January to 31 December.

With the exception of the days specified in the General Terms and Conditions for Childcare, Daycare and After-School Care of the Association for the Childcare Sector in the Netherlands (BK) and CompaNanny's Additional Terms and Conditions.

46-week contract

The 46-week contract consists of 40 weeks of school and six weeks of school holidays. If you opt for CompaNanny's 46-week contract, you are free to decide which six weeks of holidays, in addition to the 40 weeks of school, you will make use of After-School Care.

- After-School Care is available Monday to Friday during school term weeks from the end of the first school day until 6.30 pm.
- The 46-week contract entitles you to childcare in the 40 weeks of school and six weeks of school holidays per calendar year.
- During school holidays, scheduled days off and days with no classes, After-School Care is open from 7.30 am to 6.30 pm
- Extra childcare hours during scheduled days off and school days with no classes are not included in the contract hours.
- A calendar year runs from 1 January to 31 December.
- The number of weeks of holiday that you are entitled to will be included in the contract on a pro rata basis, based on the start date. You will receive a holiday credit for this.

Appendix: Services and branches with multiple National Childcare Register (LRK) numbers

- You can register your child for childcare for no more than six weeks during holiday weeks. The holiday weeks are the same as the school holidays that apply to the region where the branch is located.
- The six unpaid weeks during which your child does not make use of childcare, fall within the school holidays that apply to the region where the branch is located.
- Childcare for your child will be routinely scheduled during regular school weeks and will not be routinely scheduled during school holidays.
- The six weeks of holiday in which your child will make use of the facilities must be requested at least one month in advance via the Parent Portal. If you requested childcare during holiday weeks at least one month in advance, your child's place will be guaranteed on contract days.
- If you request childcare during holiday weeks less than a month before the desired day or for days other than the contract days, childcare will only be possible subject to availability.
- You can only register for childcare during holiday weeks for full weeks and only for contract days.
- You can register your child for childcare for no more than six weeks during school holidays.
- If you require childcare for more than 46 weeks, you can request this in the Parent Portal as an Extra Day. These days will be invoiced retrospectively.
- Any remaining credit will expire on 1 January of the following calendar year and upon termination of the contract.
- Upon termination of the contract, a pro rata settlement will be made, if necessary, for childcare services used over and above that agreed in the contract.
- The costs for the 46-week contract must be paid in 12 equal monthly instalments. An average monthly amount will be calculated for the 46 weeks per year, which will be collected monthly by direct debit. As the Tax Administration's childcare benefit is also spread over the entire year, you do not have to report the monthly childcare hours each month.
- With the exception of the days specified in the General Terms and Conditions for Childcare, Daycare and After-School Care of the Association for the Childcare Sector in the Netherlands (BK) and CompaNanny's Additional Terms and Conditions.



Appendix: Services and branches with multiple National Childcare Register (LRK) numbers

40-week contract

The 40-week contract consists of 40 weeks of school. If you opt for CompaNanny's 40-week contract, you will only make use of childcare during the 40 weeks of school.

- After-School Care is available Monday to Friday during school term weeks from the end of the first school day until 6.30 pm.
- The 40-week contract entitles you to childcare in the 40 weeks of school per calendar year.
- On scheduled days off and days with no classes at school, After-School Care is open from 7.30 am to 6.30 pm.
- Extra childcare hours during scheduled days off and school days with no classes are not included in the contract hours.
- A calendar year runs from 1 January to 31 December.
- The 40 weeks are the same as the weeks of school that apply to the region where the branch is located.
- The number of weeks that you are entitled to will be included in the contract on a pro rata basis, based on the start date.
- If you require childcare for more than 40 weeks, you can request this in the Parent Portal as an Extra Day.
- The contract type cannot be changed during the calendar year.
- The costs for the 40-week contract must be paid in 12 equal monthly instalments. An average monthly amount will be calculated for the 40 weeks per year, which will be collected monthly by direct debit. As the Tax Administration's childcare benefit is also spread over the entire year, you do not have to report the monthly childcare hours each month.

With the exception of the days specified in the General Terms and Conditions for Childcare, Daycare and After-School Care of the Association for the Childcare Sector in the Netherlands (BK) and CompaNanny's Additional Terms and Conditions.

Appendix: Services and branches with multiple National Childcare Register (LRK) numbers

0-hour holiday contract

Flexible childcare during school holidays.

- You can request flexible days via the Konnect Parent Portal.
- If your request for a flexible day is approved, you will receive an additional invoice for this day.
- An approved flexible day cannot be cancelled.
- An approved flexible day can be used as an exchange day if it is cancelled before 4.00 pm on the previous day.
- Flexible days will be approved from two weeks before the requested day, provided places are available in the group.
- Clients themselves are responsible for requests in the Parent Portal. Requests will only be processed if they have been completed correctly and on time in the Parent Portal (see the Parent Portal manual).
- Attendance must be for at least 11 hours per holiday day.

Holiday contract

Childcare for 12 weeks of school holidays.

- After-School Care is open from 7.30 am to 6.30 pm during school holidays.
- The holiday contract entitles you to 12 weeks of childcare in the school holidays per calendar year on the agreed contract day(s).
- The weeks are the same as the weeks of school holidays that apply to the region where the branch is located.
- A calendar year runs from 1 January to 31 December.
- With the exception of the days specified in the General Terms and Conditions for Childcare, Daycare and After-School Care of the Association for the Childcare Sector in the Netherlands (BK) and CompaNanny's Additional Terms and Conditions.
- The total costs of a year of holiday childcare (12 weeks of school holidays) will be charged in 12 equal instalments. The invoice amount will remain the same even in the months that include school weeks.

Appendix: Services and branches with multiple National Childcare Register (LRK) numbers

BSO – Summer weeks

During the summer vacation, children may participate in the after-school care summer weeks under the following conditions:

- Minimum purchase of 4 days (for non-CompaNanny parents. No minimum for CompaNanny parents).
- Daily rate of €110, including meals and outings.
- The childcare benefit applies (in dutch: Kinderopvangtoeslag)
- No refunds will be issued if the purchased days are not used.
- Parents will receive a flexible contract.
- Starting 4 weeks before the start date, parents can use the parent portal to indicate which days they will be attending.

Extra childcare

The primary contract holder may always request extra childcare, unless the childcare is paid for by a third party.

- You can use your stamp card or credit to pay for extra childcare.
- If the primary contract holder does not have stamp card hours or credit or it is insufficient to pay for the hours requested, the primary contract holder will receive an invoice for extra childcare for that month. Requested hours can be paid for using remaining stamp card hours and/or credit. If this is insufficient, an invoice for extra childcare will be sent for the remaining amount.
- The extra childcare requested by the primary contract holder will only be definite once CompaNanny has sent an approval confirmation via the Parent Portal. Extra days will be approved from two weeks before the requested day, provided places are available in the group. Once an extra day has been approved, it cannot be cancelled.
- You may also be entitled to childcare benefit for extra childcare hours.

Childcare during teachers' study days and school days with no classes

Guaranteed childcare on teachers' study days and school days with no classes:

- Childcare is guaranteed on contract days, provided it was requested at least one week in advance. After this period, childcare is subject to availability.
- On non-contract days, childcare is only possible if the schedule allows. Parents can request childcare during school times (from 7.30 am) and/or for an After-School Care afternoon.

Appendix: Services and branches with multiple National Childcare Register (LRK) numbers

- Teachers' study days are not included in the monthly costs and hours and will be charged additionally⁵. It is possible to purchase childcare for teachers' study days (invoice or credit, including the stamp card); using exchange days is not an option for these days.

Transportation to/from After-School Care

Exceptions to Article 17 'Transportation to/from After-School Care' of CompaNanny's Additional Terms And Conditions (version 1-08-2025) are:

- Transportation from the European School The Hague: CompaNanny does not arrange the transportation from The European School The Hague to CompaNanny Statenkwartier After-School Care. However, if desired, you can use Achttax shuttle service. You can contact them on 070-3839696 and explain that you require transportation to CompaNanny Statenkwartier (Eisenhowerlaan 53). The costs for the shuttle service are at the expense of the Parent.
- Transportation from the International School of The Hague: CompaNanny does not arrange the transportation from the International School of The Hague to CompaNanny Statenkwartier After-School Care and CompaNanny Maanplein After-School Care. However, if desired, you can use the shuttle service. Please explain that you require transportation to CompaNanny Statenkwartier (Eisenhowerlaan 53) or CompaNanny Maanplein (Maanplein 146). The costs for the shuttle service are at the expense of the Parent.

Before-School Care (VSO)

VSO is offered by CompaNanny Op De Wadden:

| | |
|--------------------------------|---------------------------|
| Location of Before-School Care | : CompaNanny Op De Wadden |
| Address | : Zevenwoudenplantsoen 3 |
| Postal code | : 2036 NK |

⁵ With the exception of CompaNanny Marienberg, Paasberg and Postpad. Childcare on teachers' study days is included in the contract at these locations.

Appendix: Services and branches with multiple National Childcare Register (LRK) numbers

Changing services provided

CompaNanny is allowed to change its services and products if doing so is in the interest of operational management.

During the term of the contract, CompaNanny may unilaterally change or terminate the group structure, products or extra products, services and childcare packages, the childcare hours offered per day (in the case of After-School Care, whether or not, as a result of changed school hours), number of weeks open per year, opening and closing hours, transportation and costs of transportation or other activities for valid reasons (whether or not by branch). The aforementioned changes may also include designating another location for childcare or merging groups (possibly at another location).

Lastly

If a problem arises that we cannot resolve together, the court in Amsterdam will take a decision. If, according to the law, another court must decide, the primary contract holder will have one month to choose that court. This month will commence as soon as CompaNanny requests it.



Appendix: Services and branches with multiple National Childcare Register (LRK) numbers

Branches with multiple National Childcare Register (LRK) numbers

Our Postpad and Paasberg groups are located at different addresses and have two LRK numbers. Our Ripperda branch has three LRK numbers. It is important to provide the Netherlands Tax Administration authorities with the correct LRK number. Your child will start at the LRK number stated in the contract. If your child moves to another group, the Branch Manager will inform you in good time and you must inform the Netherlands Tax Administration authorities of the change in LRK number.

At the start and end of the day on quiet days, during illness and during holidays, we may provide childcare to groups at or from other locations at one of the other LRK numbers of the branches mentioned above.

CompaNanny Postpad and Paasberg

CompaNanny includes:

- Branch : CompaNanny Postpad
Address : Postpad 1
Postal code and city : 6862 CM Oosterbeek
- LRK number : 366049744 and;
- Branch : CompaNanny Paasberg
Address : Paasberg 14
Postal code and city : 6862 CC Oosterbeek
- LRK number : 875000575

CompaNanny Ripperda I, II and III

CompaNanny includes Hazeltje Na School B.V.: Branches:

- Branch : Ripperda I
Address : Sint Joriseveld 62
Postal code and city : 2023 GE Haarlem
LRK number : 211213226 and;
- Branch : Ripperda II
Address : Sint Joriseveld 53
Postal code and city : 2023 GE Haarlem
LRK number : 172594364 and;
- Branch : Ripperda III
Address : Sint Joriseveld 72-73
Postal code and city : 2023 GE Haarlem
LRK number : 208660550

Appendix: Services and branches with multiple National Childcare Register (LRK) numbers

- By signing the contract, the Parent consents to childcare groups at Ripperda I, Ripperda II and Ripperda III being combined across branches. Combining groups across branches may take place on days on which the school is closed and during school holidays. The children at Ripperda I and II will be cared for at Ripperda III. If only Ripperda I and II are combined, childcare will take place at Ripperda I.
- Ripperda groups 3A, B and C will be cared for in the same room. Meals will be served at the designated communal tables in this room. Occasionally, the composition of the designated communal tables may change or the tables may be merged with other tables if the number of children allows for this. By signing the contract, the Parent consents to changing the designated communal table and merging communal tables during the meals.

CompaNanny Op Dreef

It is possible that groups from different branches will be combined at one location (at CompaNanny Ripperda) during school holidays and on Wednesdays or Fridays. If this is the case, Parents will be informed in advance of this combining of groups.

CompaNanny Meerwijk

It is possible that groups from different branches will be combined at one location (at CompaNanny Op De Wadden) during school holidays. If this is the case, Parents will be informed in advance of this combining of groups.

Do you have any questions? Check our [FAQ page](#) or contact us.
We'll be happy to help.



**Kindergarten (PO)
& Pre-school (VVE)**

Appendix: Services and branches with multiple National Childcare Register (LRK) numbers

Services and terms and conditions of Kindergarten (PO) & Pre-School (VVE)

CompaNanny will assess whether it is possible to make use of or to continue to make use of the service packages listed below at your branch. [Our locations⁶](#) page on our website clearly shows which services are provided at your branch.

Kindergarten (PO) and Pre-School Education (VVE)

- The Kindergarten and Pre-school Education (VVE) are opened 40 weeks per year, during school term weeks. The Kindergarten is closed during school holidays (12 weeks per year) and on teachers' study days and school lesson-free days.
- The 40 weeks are invoiced in 12 equal instalments, which is why you will also receive an invoice for childcare during the holidays.
- Kindergarten and Pre-School Education (VVE) are provided by CompaNanny 7e Montessori and CompaNanny 2e Openlucht. The opening hours of the Kindergarten/VVE are:
 - CompaNanny 7e Montessori: Monday to Friday, 8.30 am to 12.30 pm.
 - CompaNanny 2e Openlucht, Amsterdamseweg and Statenkwartier: Mon/Tues/Thurs, 8.00 am to 1.00 pm and Wed/Fri, 8.00 am to 12 noon.
 - CompaNanny Titiaan, Bachzaal, Maanplein, Benoordenhout and Burggravenlaan: Monday to Friday, 8.00 am to 1.00 pm.

Changing services provided

CompaNanny is allowed to change its services and products if doing so is in the interest of operational management.

During the term of the contract, CompaNanny may unilaterally change or terminate the group structure, products or extra products, services and childcare packages, the childcare hours offered per day (in the case of After-School Care, whether or not, as a result of changed school hours), number of weeks open per year, opening and closing hours, transportation and costs of transportation or other activities for valid reasons (whether or not by branch). The aforementioned changes may also include designating another location for childcare or merging groups (possibly at another location).

⁶ <https://www.compananny.com/en/locations/>

Appendix: Services and branches with multiple National Childcare Register (LRK) numbers

Additional terms and conditions for Pre-School Education (VVE)

- We will register children who attend the VVE Kindergarten with the VVE Electronic Counter Amsterdam (EL-VVE). Requests to access, correct, delete or reduce information on Pre-School Education participants can be submitted via CompaNanny.
- City of Amsterdam Allowance: If a client is eligible for an allowance from the City of Amsterdam, the amount will be based on the information provided by the client. If there is a change in the client's situation that results in a reduction or termination of the allowance, the client must notify CompaNanny of the change within four weeks.
- City of Amsterdam: By signing the contract, parents/guardians acknowledge that they are aware of the following points:
 - Parents/guardians have completed the trial calculation fully and truthfully.
 - Parents/guardians themselves are responsible for reporting any changes in their situation.
 - If parents/guardians receiving an allowance from the municipality keep their toddler from attending Pre-School Education for two consecutive weeks without giving reasons, CompaNanny will notify the municipality in writing.
 - Parents/guardians agree to the competent authorities checking their entitlement to childcare benefit.
- Exchange days and extra days: You can exchange days if there are places available in the group. It is not possible to request one-off extra days. Exchange days can be requested via the Parent Portal. Exchange days will only be granted if the group's schedule allows this.
- Weekly attendance: Because it is important that children are exposed to a language for a sufficient number of hours per week for their language development, at CompaNanny we require a minimum attendance of two days a week for VVE childcare. However, we strongly recommend that toddlers attend the centre three days a week.
- Priority for admission to school: Childcare at 7e Montessori VVE Kindergarten does not give priority for admission to the 7e Montessori School.
- Invoicing: All costs for VVE Kindergarten are collected on the first of the month of the childcare in question. The municipality childcare allowance is transferred directly to CompaNanny. CompaNanny therefore only collects the parental income-dependent contribution.

Appendix: Services and branches with multiple National Childcare Register (LRK) numbers

Lastly

If a problem arises that we cannot resolve together, the court in Amsterdam will take a decision. If, according to the law, another court must decide, the primary contract holder will have one month to choose that court. This month will commence as soon as CompaNanny requests it.

Do you have any questions? Check our [FAQ page](#) or contact us. We'll be happy to help.